

ENGLISH

*Our ideas are
boundless.*



INSPIRED TO ASPIRE
GREATER SUSTAINABILITY:
PRODUCTS DESIGNED BY
THE DENTAL THINK TANK.

2019/2020

BESSER BECHT. MADE IN OFFENBURG.

 **Becht®**

ALFRED BECHT GMBH



We love dynamics. Especially when they are sustainable and add value.

When a company is reaching its 100-year milestone and still bears the name of its founder, that's a sure sign of sustainability. Long-term thinking and acting, generation after generation, that's the true meaning of sustainable. At Alfred Becht GmbH, it is just as important to us today as it was decades ago that we deliver unsurpassed performance – powered by our experience, ability and entrepreneurial spirit – and do so, day in and day out. In the way we work. In the quality of our products. In the way we act.

That's how new ideas and products are born – well thought through, practical and innovative. Dynamics that reliably create added value – for our customers as much as for our company in equal measure. Our profound process depth extends from product development and production to marketing and personalized service.

That's how we ensure sustainable growth by upholding the strong values we believe in: Holding ourselves accountable to humanity and the environment. Showing a healthy willingness to perform and deliver. Striving for long-term relationships,

all the while engaging with society and community. These higher ideals – linked to the tinkerer-inventor tradition characteristic of our region – have made us the Dental Think Tank we embody today.

This challenge we face every day with enthusiasm. We thank you for the trust you have placed in us!

Kind regards,



Ulrich A. Becht
Managing Director



A company history spanning three generations.

The little things ... that made us big.

We're proud of the fact that Becht is one of the success stories that have made Germany economically strong. Founded 95 years ago by man with an entrepreneurial vision, the company has been the life's work of three generations. The third owner of the business has energetically held the reins for over 20 years.

It's a family business in the very best sense: small enough to retain its values while being committed to its regional roots and sustainable development.

Over the years, every new development and every new product idea has taken us forwards. We grow on the basis

of existing business, a solid foundation always producing something new, as we increase our rates of production. And although we now do business in many countries around the world, we believe the reason we are so good is that we are based right here in southern Germany, on the edge of the Black Forest.

This commitment to our local region is reflected in our sense of responsibility to our employees, partners and customers. Reliability, fairness and social engagement are values we have always believed in, and continue to believe in. It's been that way since 1923 – and it's not about to change.

1923

Alfred Becht sets up a dental wholesale company in Offenburg under his name.

1954

Right next door is the Black Forest. That's why from now on a stylized fir tree makes the company logo unique.

1959

The company grows and expands. And moves to a new building on Luisenstrasse in Offenburg.



1955

In the second generation the son Hans F. Becht enters as successor to the founding father.

1987

The Alfred Becht partnership becomes a GmbH.

1989

The building becomes too small. The Alfred Becht GmbH moves to its new premises on Carl-Zeiss Strasse conveniently placed by the gateway to the city.



1998

Better safe than sorry: Becht is now certified – according to ISO 9002/46002 and directive 93/42/EC governing medical devices.

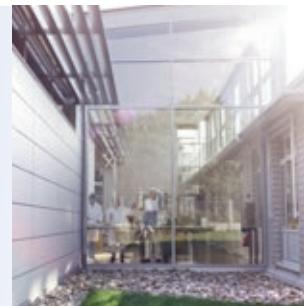
2006

The growth of the disinfection and cleaning agents have been so successful that a new state of the art manufacturing warehouse had to be built.



1995

On the first of January the third generation goes to work. Ulrich A. Becht takes over the company.



2016

Room for growth: Becht expands and builds another facility for the production and storage of medical devices.

2012

From the fir tree to the triangle: our logo is revised.

A product history spanning three generations.

1926

The first trade mark is registered in the patent office for the Becht opaline.

1935

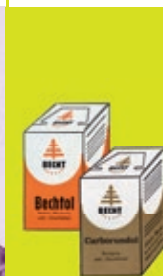
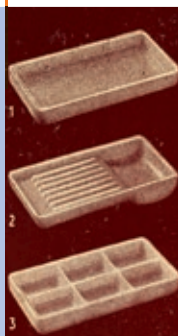
Order and cleanliness in the dental office: The first medicament bottles are delivered.

1950

Becht starts production of the first cleaning and disinfecting liquid: Bechtol and Carborundol.

1995

An important milestone in hygiene, Becht introduces the Medi-Spenser system.



1937

A success story begins: the Fräsator makes routine in the dental office clean and safe.

1965

A classic with generations of dentists: Rollofix – the glass container for the hygienic storage of cotton rolls.

1973

We start the fully automated production of paper and guttapercha points for endodontic treatment.

DIE DENTALE
IDEENSCHMIEDE.

Becht®
ALFRED BECHT GMBH

BESSER BECHT.
MADE IN OFFENBURG.

2013

The development of a new product has been completed: ProphyRepair – the first all-in-one prophylactic paste with remineralization using Hydroxylapatite.

2016

Wet wipes for disinfection – our Becht XL Wipes start leaving the production line in Offenburg.

2018

Becht4care® – everything you would expect from a modern hand disinfection gel.



**New
formula**



2008

The first batch of root canal sealer Perma Evolution is produced and put on the market.

2011

The go-ahead for the new concentrate Bechtol Premium for instrument disinfection.

2015

Thanks to a new batch formula, our opaline and glass products are perfectly suited for use in new-generation autoclaves.

2018

Bechtol S plus – an advancement in instrument disinfection

2019

Our new Becht4Prophy Disposable Prophylaxis Angle featuring improved ergonomics and safety.

It's all about talking to people. Not an anonymous hotline.

As we always say, "There's nothing like speaking one-on-one." Even if it's just a bit of personally conveyed information. That's why you'll find your key contact persons listed below.

All of us are delighted to take your questions and suggestions. Welcome to Becht!



Ulrich A. Becht
Managing Director
Tel. +49 781 60586-0
becht@becht-online.de



Susanne Bühler
Assistant Sales |
Marketing Export
Tel. +49 781 60586-21
buehler@becht-online.de



Harald Kolloch
Vice-president |
Sales and Marketing
Tel. +49 781 60586-0
kolloch@becht-online.de



Sabrina Mariniello
Assistant Sales Export
Tel. +49 781 60586-24
mariniello@becht-online.de



Elvira Meier
Marketing | Communication
Tel. +49 781 60586-12
meier@becht-online.de



Christian Gottschling
Area Export Manager
Tel. +49 331 23700347
gottschling@becht-online.de



Emre Erten
M. Sc.
Productmanagement |
Regulatory Affairs
Tel. +49 781 60586-45
erten@becht-online.de

Contents

<i>Disinfection and Cleaning</i>	10
<i>Professional Prophylaxis</i>	30
<i>Endodontics</i>	38
<i>Opaline and Glass Products</i>	46
<i>Cotton Wool Centers and Containers</i>	68
<i>Articulating Paper</i>	72
<i>Tray Paper</i>	76
<i>ProfiDent Polishers and Polishing Strips</i>	78
<i>Patient- and X-Ray Record Systems</i>	80
<i>ProfiLab Polishers and Brushes</i>	84
<i>Index</i>	92

Disinfection and Cleaning

If it's not clean, it can't truly shine:
Hygiene is part of every clinical routine.
Now you can make it top-notch.



Surface disinfection

We are constantly developing new, innovative solutions for practical hygiene management. Our products are designed to disinfect and clean surfaces, hands, instruments, suction devices and the ambient air. Our products additionally support staff at medical practices in implementing a multitude of regulatory guidelines.



Becht XL Wipes plus

Ready-to-use disinfecting wipes

for disinfecting and cleaning of alcohol resistant medical surfaces e. g. medical chairs, trays, units in dental and medical offices

- ▶ effective against bacteria (incl. MRSA) and yeast in 1 minute under high organic load (EN 13727/13624)
- ▶ successfully tested in the 4-field test acc. to EN 16615
- ▶ tuberculocidal (M. terrae) in 5 minutes (EN 14348)
- ▶ inactivates HBV/HCV/HIV/BVDV/Vaccinia viruses in 1 minute (EN 14476)
- ▶ specially soft, lint-free, absorbent and tear-resistant material
- ▶ strong release of the disinfecting solution on surface
- ▶ with fresh lemon scent, gentle on materials
- ▶ disinfecting liquid: 2,1 l Bechtoid plus
- ▶ suitable for use on perspex (Röhm-test)
- ▶ contains no phenols or aldehydes
- ▶ size of wipes: 28 x 30 cm
- ▶ weight of wipes: 50 g/qm

REF	Product
530.90L	Bag with 90 wipes
530	Dispenser bucket Becht XL Wipes plus





The dispenser box, which can be purchased separately, is supplied complete with resealable lid and label indicating the specific date it was opened. Even more, it is stackable, space-saving and recyclable.

Becht XL Wipes alcohol-free

Ready-to-use disinfecting wipes

for disinfecting and cleaning of alcohol sensitive medical devices e. g. natural and synthetic leather

- ▶ effective against bacteria (incl. MRSA) and yeast in 1 minute under high organic load (EN 13727/13624)
- ▶ successfully tested in the 4-field test acc. to EN 16615
- ▶ inactivates HBV/HCV/HIV/BVDV/Vaccinia viruses in 1 minute (EN 14476)
- ▶ specially soft, lint-free, absorbent and tear-resistant material
- ▶ strong release of the disinfecting solution on surface
- ▶ free of alcohol and perfumes for best compatibility
- ▶ disinfecting liquid: 1,9 l Bechtozid soft
- ▶ contains no phenols or aldehydes
- ▶ size of wipes: 28 x 30 cm
- ▶ weight of wipes: 50 g/qm

REF	Product
531.90	Bags with 90 wipes
531	Dispenser bucket Becht XL Wipes alcohol-free



Bechtifix plus disinfecting wipes

Ready-to-use disinfecting wipes for disinfecting and cleaning of alcohol resistant medical devices e. g. medical chairs, trays, units in dental and medical offices

- ▶ effective against bacteria (incl. MRSA) and yeast in 1 minute under high organic load (EN 13727/13624)
- ▶ successfully tested in the 4-field test acc. to EN 16615
- ▶ tuberculocidal (M. terrae) in 5 minutes (EN 14348)
- ▶ inactivates HBV/HCV/HIV/BVDV/Vaccinia-viruses in 1 minute (EN 14476)
- ▶ particularly soft, absorbent and tear-resistant
- ▶ high volume of release of disinfecting solution on surface
- ▶ with fresh lemon scent
- ▶ disinfecting liquid: Bechtozid plus
- ▶ suitable for use on perspex (Röhm-test)
- ▶ contains no phenols or aldehydes
- ▶ size of wipes: 14 x 20 cm

REF	Product
548.100L	Dispenser box with 100 tissues
548.100LNF	Refill with 100 tissues

i 4-field-Test:

Today, this test is regarded as a practice-oriented, standardized verification method for determining the disinfectant efficacy of pre-soaked chemical wipes for disinfection of flat surfaces. The procedure is described in EN 16615.





Bechtifix alcohol-free disinfecting wipes

Ready-to-use disinfecting wipes for disinfecting and cleaning of alcohol sensitive medical devices, natural and synthetic leather

- ▶ effective against bacteria (incl. MRSA) and yeast in 1 minute under high organic load (EN 13727/13624)
- ▶ successfully tested in the 4-field test acc. to EN 16615
- ▶ inactivates HBV/HCV/HIV/BVDV/Vaccinia-viruses in 1 minute (EN 14476)
- ▶ particularly soft, absorbent and tear-resistant non-woven fabric
- ▶ high volume of release of disinfecting solution on surface
- ▶ free of perfumes and coloring agents for best compatibility
- ▶ disinfecting liquid: Bechtozid soft
- ▶ contains no phenols or aldehydes
- ▶ size of wipes: 14 x 20 cm

REF	Product
549.100	Dispenser box with 100 tissues
549.100NF	Refill with 100 tissues

Surface disinfection

Bechtozid Premium Ready-to-use quick disinfection

For the disinfection and cleaning of high-risk surfaces of medical devices, e.g. patient treatment chairs, unit handles and handpieces

- ▶ highly effective against bacteria (incl. MRSA) and yeast in 30 sec (EN 13727/13624)
- ▶ tuberculocidal (*M. terrae*) in 30 seconds (EN 14348)
- ▶ inactivates HBV/HCV/HIV/HPV/BVDV/Vaccinia viruses in 30 sec (EN 14476)
- ▶ inactivates Adeno/HPV in 1 minute and Polio in 2 minutes (EN 14476)
- ▶ inactivates HBV/HCV/HIV/BVDV/H1N1/Vaccinia-Viren in 30 seconds (EN 14476)
- ▶ tested in accordance with the directives of the DGHM (Deutsche Gesellschaft für Hygiene und Mikrobiologie) of 4/2015 under high organic load
- ▶ gentle to all alcohol resistant surfaces, non-corrosive
- ▶ perfume-free or with fresh citrus scent

REF	Unit	Product
561PF	bottle	1-Liter bottle, ready-to-use solution, perfume-free, reusable, without spray head
561	bottle	1-Liter bottle, ready-to-use solution, with citrus scent, reusable, without spray head
561.5PF	canister	5-Liter canister, ready-to-use solution, perfume-free
561.5	canister	5-Liter canister, ready-to-use solution, with citrus scent
561.10PF	canister	10-Liter canister, ready-to-use solution, perfume-free
561.10	canister	10-Liter canister, ready-to-use solution, with citrus scent
544.SP	-	Spray head for 1-Liter bottle



Bechtozid plus Ready-to-use quick disinfection

Ready-to-use solution. For the disinfection and cleaning of high-risk surfaces of medical devices, e.g. patient treatment chairs, unit handles and handpieces

- ▶ effective against bacteria (inkl. MRSA) and yeast in 1 minute (EN 13727/13624)
- ▶ tuberculocidal (M. terrae) in 30 seconds (EN 14348)
- ▶ tested in accordance with the directives of the DGHM (Deutsche Gesellschaft für Hygiene und Mikrobiologie) of 4/2015 under high organic load
- ▶ inactivates HBV/HCV/HIV/BVDV/Vaccinia viruses in 1 minute (EN 14476)
- ▶ gentle to alcohol resistant surfaces (Röhm test 12/2006)
- ▶ contains no phenols or aldehydes
- ▶ neutral or with fresh citrus scent
- ▶ biodegradable



REF	Unit	Product
544N	bottle	1-Liter bottle, ready-to-use solution, neutral, reusable, without spray head
544	bottle	1-Liter bottle, ready-to-use solution, with citrus scent, reusable, without spray head
544.5	canister	5-Liter canister, ready-to-use solution, with citrus scent
544.10N	canister	10-Liter canister, ready-to-use solution, neutral
544.10	canister	10-Liter canister, ready-to-use solution, with citrus scent
544.SP	-	Spray head for 1-Liter bottle



Bechtozid soft

Ready-to-use quick disinfection

Foam-spray for the disinfection and cleaning of alcohol sensitive medical devices, natural and synthetic leather

- ▶ highly effective against bacteria (incl. MRSA) and yeast in 1 minute under high organic load (EN 13727/13624)
- ▶ inactivates HBV/HCV/HIV/BVDV/Vaccinia viruses in 1 minute (EN 14476)
- ▶ tested in accordance with the directives of the DGHM (Deutsche Gesellschaft für Hygiene und Mikrobiologie) of 04/2015
- ▶ alcohol-free and without aerosol
- ▶ free of perfumes and coloring agents for best compatibility
- ▶ duo spray head (foam or spray)

REF	Unit	Product
537	bottle	1-Liter bottle, ready-to-use solution, reusable, duo spray head
537.5	canister	5-Liter canister, ready-to-use solution
537.10	canister	10-Liter canister, ready-to-use solution
537.SP	-	Duo spray head for 1-Liter bottle



i The guideline issued by the Robert Koch Institute (RKI) lay down written specifications for implementing hygiene measures in routine practice. Our proprietary hygiene plan lends you valuable support in implementing your own, practice-specific hygiene regimen. Depending on the risk of infection and the type of (medical) device reprocessed, you as the practice owner can choose the disinfectant that best suits your needs.

Bechtozid sensitive Ready-to-use quick disinfection

QAC-free surface disinfecting and cleaning spray for medical devices, e.g. trays, hand pieces. High-performance. Gentle on materials. Economical.

- ▶ effective against bacteria (incl. MRSA) and yeast in 1 minute (EN 13727/13624)
- ▶ guarantees active protection against tuberculosis (M. terrae) in 5 minutes (EN 14348)
- ▶ inactivates HBV/HCV/HIV/BVDV/Vaccinia-viruses in 1 minute (EN14476)
- ▶ tested in accordance with the directives of the DGHM (Deutsche Gesellschaft für Hygiene und Mikrobiologie) of 04/2015
- ▶ less harmful for human and environment
- ▶ for use on acrylic surfaces
- ▶ neutral or with fresh lemon scent



Quat-free – prevents respiratory tract irritation. Significantly reduced alcohol content (< 30 %).

REF	Unit	Product
563L	bottle	1-Liter bottle, ready-to-use solution, with lemon scent, reusable, without spray head
563N	bottle	1-Liter bottle, ready-to-use solution, with neutral scent, reusable, without spray head
563.5L	canister	5-Liter canister, ready-to-use solution, lemon scent
563.5N	canister	5-Liter canister, ready-to-use solution, neutral scent
563.10L	canister	10-Liter canister, ready-to-use solution, lemon scent
563.10N	canister	10-Liter canister, ready-to-use solution, neutral scent
544.SP	-	Spray head for 1-Liter bottle

Surface disinfection



Bectid Premium Concentrate

Highly effective disinfecting and cleaning solution for use on large surfaces, e.g. floors

- ▶ highly effective against bacteria (incl MRSA) in 5 minutes in a 3% solution and in 60 minutes in a 0,25% solution (EN 13727))
- ▶ effective against yeast in 5 and 60 minutes in a 0,1% solution (EN 13624)
- ▶ tested in accordance with the directives of the DGHM (Deutsche Gesellschaft für Hygiene und Mikrobiologie) of 4/2015 under high organic load
- ▶ effective against fungi (A.Brasiiliensis) in 60 minutes in a 6% solution (EN 13624)
- ▶ kills spores in 60 minutes in a 4% solution (EN 13704)
- ▶ inactivates all enveloped viruses (HBV/HCV/HIV/BVDV/Vaccinia/Ebola/H1N1) in 5 minutes in a 0,5% solution (EN 14476)
- ▶ full virucidal effectiveness (Adeno/Polio/Noro) in 60 minutes in a 5% solution (EN 14476)
- ▶ disinfects, cleans and protects in just one application on wet proved surfaces
- ▶ contains no aldehydes or phenols

REF	Unit	Product
533	dispenser bottle	1 liter concentrate, reusable
533.5	canister	5 liter concentrate

i Use biocides safely. Read carefully marking and product information before use.

i Increase safety for you and your patients by using our “online calculator” to formulate the correct mixing ratio. You will find further information on our website at www.becht-online.de

Hand disinfection



Becht4care[®] Hand disinfection gel

Alcohol-based antiseptic gel for hygienic and surgical hand disinfection

- ▶ highly effective against bacteria, incl. MRSA (EN 1040/13727) and yeast (EN 1276/13624) in 30 seconds
- ▶ tuberculocidal (*M.terrae*) in 1 minute (EN 14348)
- ▶ inactivates HBV/HCV/HIV/BVDV in 1 minute
- ▶ colorless and transparent
- ▶ phenol and aldehyde-free
- ▶ after the application of the gel no rinsing with water is needed
- ▶ leaves no sticky feeling after application
- ▶ softens and refreshes the skin
- ▶ moisturizing ingredients
- ▶ is absorbed quickly
- ▶ pleasantly scented

REF	Unit	Product
525.100	bottle	100 ml
525.500	bottle for Euro dispenser	500 ml
525.1	bottle for Euro dispenser	1 Liter
525.5	canister	5 Liter



i Use biocides safely. Read carefully marking and product information before use.

Instrument disinfection

Bechtol Premium Concentrate

Next generation disinfecting and cleaning solution for surgical instruments

- ▶ highly effective against bacteria (incl. MRSA) and yeast in 15 minutes in a 2% and in 30 minutes in a 1% solution (EN 13727/13624)
- ▶ guarantees active protection against *M. terrae* in 15 minutes in a 3% solution and in 30 minutes in a 2% solution (EN 14348)
- ▶ tested in accordance with the directives of the DGHM (Deutsche Gesellschaft für Hygiene und Mikrobiologie) of 4/2015 under high organic load
- ▶ inactivates enveloped viruses (HBV/HCV/HIV/BVDV/Vaccinia) and non-enveloped viruses (Adeno/Polio/HPV/Rota and Noro) in a 3% solution in 15 minutes (EN 14476)
- ▶ kills spores in 30 minutes in a 3% and in 60 minutes in a 1% solution (EN 13704)
- ▶ contains no phenols or aldehydes
- ▶ suitable for use in an ultrasound device in 5 minutes in a 3% solution
- ▶ excellent compatibility on materials

REF	Unit	Product
536	dispenser bottle	1 Liter concentrate, reusable
536.5	canister	5 liter concentrate



Bechtol CLASSIC Concentrate

For the disinfection and cleaning of surgical instruments. Gentle on materials. High-performance. Economical.

- ▶ effective against bacteria (incl. MRSA) and yeast in 15 minutes in a 3% solution (EN 13727/13624) and in 60 minutes in a 1% solution (EN 13727/13624)
- ▶ effective against fungi (T. Interdigitale) in 30 minutes in a 3% solution (EN 13624)
- ▶ guarantees active protection against tuberculosis (M. terrae) in 30 minutes in a 3% solution under high organic load (EN 14348)
- ▶ tested in accordance with the directives of the DGHM (Deutsche Gesellschaft für Hygiene und Mikrobiologie) of 4/2015 under high organic load
- ▶ inactivates enveloped viruses (HBV/HCV/HIV/BVDV/Vaccinia) and non-enveloped viruses (SV40/Noro) in 15 minutes in a 3% solution (EN 14476)
- ▶ suitable for use in an ultrasound device in 5 minutes in a 4% solution
- ▶ excellent compatibility on materials



REF	Unit	Product
534	dispenser bottle	1 liter concentrate, reusable
534.5	canister	5 liter concentrate

i Maintaining the correct mixing ratio of Bechtol Premium/CLASSIC concentrate to water is crucial for disinfectant efficacy and therefore for the success of the hygiene measures to be performed. Use our "online calculator" at www.becht-online.de



Bechtol plus

Ready-to-use Solution

The highly effective disinfecting and cleaning solution for rotating instruments

- ▶ effective against bacteria (incl. MRSA) and yeast in 5 minutes (EN 13727/13624)
- ▶ tested in accordance with the directives of the DGHM
- ▶ inactivates HBV/HCV/HIV/Adeno/Polio viruses in 5 minutes (EN 14476)
- ▶ contains no phenols or aldehydes
- ▶ suitable for use in an ultrasound device in 5 minutes
- ▶ with fresh citrus scent

REF	Unit	Product
539	bottle	1 liter ready-to-use solution
539.5	canister	5 liter ready-to-use solution



Bechtol Ready-to-use Solution

The non-corrosive disinfecting and cleaning bath for burs, diamonds and root canal instruments

- ▶ kills bacteria und yeast in 30 minutes (EN 13727/13624) and inactivates HBV/HCV/HIV viruses in 60 minutes
- ▶ disinfection, cleaning and lubricating in one step
- ▶ gentle on materials even during extended soaking, e.g. over the weekend
- ▶ non-corrosive
- ▶ contains no phenols or aldehydes
- ▶ product known for its reliability
- ▶ suitable for use in an ultrasound device

REF	Unit	Product
543	bottle	1 liter ready-to-use solution
543.5	canister	5 liter ready-to-use solution

Bechtol S plus Ready-to-use Solution

The highly effective disinfecting and cleaning solution for rotating instruments

- ▶ effective against bacteria (incl. MRSA) and yeast in 15 minutes (EN 13727/13624)
- ▶ guarantees active protection against tuberculosis (M.terrae) in 30 minutes (EN 14348)
- ▶ tested in accordance with the directives of the DGHM of 04/2015
- ▶ inactivates enveloped viruses (HBV/HCV/HIV/BVDV/Vaccinia) and non-enveloped viruses (Adeno/Polio/HPV/Rota and Noro) in 15 minutes (EN 14476)
- ▶ effective against spores in 30 minutes (EN 13704)
- ▶ excellent compatibility on materials
- ▶ suitable for use in an ultrasound device in 5 minutes
- ▶ contains no phenols or aldehydes

REF	Unit	Product
538	bottle	1 liter ready-to-use solution
538.5	canister	5 liter ready to-use solution



i Bechtol S plus and Becht bur sterilizers Fräsator – an unbeatable hygiene management duo. After use, simply drop the used rotating instruments into one of the bur sterilizers (REF 630 and REF 631) and reliably disinfect them with Bechtol S plus. After the immersion time is up, the sieve insert should be lifted to allow the liquid to drain.



Suction/Air Cleaner



Becht Suction plus

Concentrate

Highly effective disinfecting, cleaning and deodorizing solution for dental aspirating systems with/without amalgam separator and spittoon bowls

- ▶ effective against bacteria (incl. MRSA) und yeast in 5 minutes in a 2% solution under high organic load (EN 13727/14562)
- ▶ tuberculocidal (*M. terrae*) in 30 minutes in a 2% solution (EN 14348) under high organic load
- ▶ inactivates BVDV und Vaccinia viruses in 15 minutes in a 3% solution (EN 14476)
- ▶ no foaming solution
- ▶ gentle on materials
- ▶ contains no phenols or aldehydes

REF	Unit	Product
564	disp. bottle	1 liter concentrate, reusable
564.5	canister	5 Liter concentrate



AirFresh med Spray

Cleans the air from dust and germs

- ▶ specially recommended for use in dental clinics, hospitals and nursing homes
- ▶ odour-absorbing
- ▶ lasting fresh scent
- ▶ economical use
- ▶ contains propane/butane as propellant

REF	Unit	Product
590	spray can	75 ml

Asphalin B/AquaHy

Asphalin B tablets

To keep sterilized dental and surgical instruments sterile until reuse

- ▶ highly efficient and most economic in use (14 days approx. / tablet)
- ▶ specially recommended for root canal instruments stored in Asphalin trays (see page 62)
- ▶ easy to handle cell pack packing



REF	Unit	Product
554	Cell pack packing	60 tablets
554.1	Cell pack packing	10 tablets

AquaHy Concentrate

Stabilizer liquid for spray devices used in podiatry

- ▶ reduces germs within a few minutes
- ▶ without scent
- ▶ easy to use
- ▶ economical (concentration 1:50)



REF	Unit	Product
560	bottle	100 ml concentrate

Sundries



Bur and Diamond Cleansing Brushes

with plastic handle

- ▶ hardness infinitely adjustable
- ▶ can be disinfected by Becht disinfecting wipes
- ▶ length (without working part): 12 cm

REF	Material
145	brass wire , thickness 0,08 mm
145.1	spare brass wire
147	stainless steel wire, thickness 0,08 mm
147.1	spare brass wire



Bur brush

for bur cleaning

with stainless adjustable belt

REF	Material
144	brass wire, thickness 0,10 mm

Dispenser pump



REF	Product
567.1	for 1 liter bottle
567.5	for 5 liter canister



REF	Product
567.10	for 10 liter canister

Pouring spout



REF	Product
567.51	for 5 and 10-liter canister

Canister key



REF	Product
567.61	for 5 and 10-liter canister

Disinfection tub

of plastic material

- ▶ with drain inset and lid
- ▶ capacity 3 liter approx.



REF	Size
566	315 x 206 x 125 mm

Professional Prophylaxis

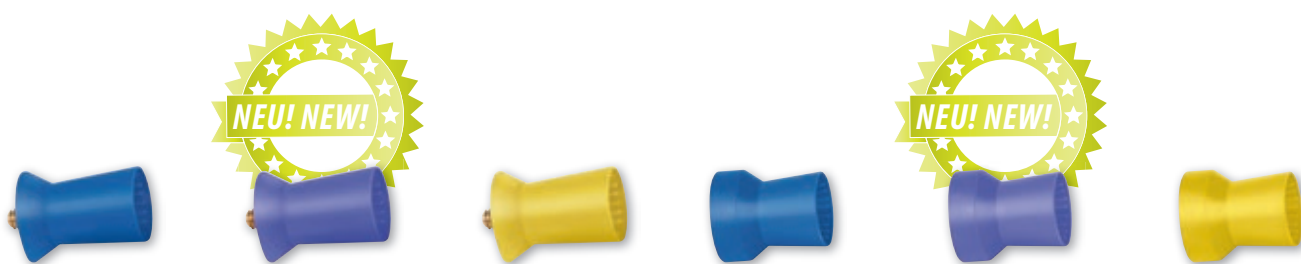
The cleaner the teeth, the more attractive every smile:
With our products, you're not simply polishing teeth.
You're burnishing your image as well.



Polishers

Prophylactic Polishers latex-free

We supply prophylactic polishers in different color-coded hardness values and different mounting options for cleaning and polishing dental enamel. A distinguishing quality feature is that they are latex-free, thereby reducing the risk of allergic reactions. Another feature common to all polishers is their smooth outer surface and internal lamellae, which prevent prophylactic polishing paste from spraying off during treatment. We also put a great deal of thought into the drive mechanism. The spray guard on the shoulder of the polisher effectively prevents paste from penetrating into the contra-angle handpiece.



► screw-in

REF	Color	Content
200.1	blue	24 pieces
200.3	purple	24 pieces
200.2	yellow	24 pieces

► snap-on

REF	Color	Content
202.1	blue	24 pieces
202.3	purple	24 pieces
202.2	yellow	24 pieces



► mounted on CA

REF	Color	Content
204.1	blue	24 pieces
204.3	purple	24 pieces
204.2	yellow	24 pieces

i Becht prophylactic polishers are class IIa medical devices and are intended for single use only. All packaging units are shipped non-sterile. Please observe the maximum working speed of 3000 min⁻¹ rpm.

The hardness of the individual polishers is indicated by their color.

Blue: Soft, for final polishing of the tooth surface, especially near the gingival sulcus to protect the soft tissue.

Purple: Medium, universal hardness for cleaning and polishing.
Yellow: Hard, for removing severe plaque.

Brushes

Cup Brushes

Standard instruments for performing prophylactic measures at dental practices. Our dental brushes in combination with our prophylactic pastes quickly and reliably remove plaque and discoloration from tooth surfaces. The result is clean and aesthetically pleasing enamel. Our product range offers dentists a wide selection of materials and hardness values that best meet their individual demands for streamlined ergonomics.



► with nylon filament, white, hard

REF	Content
260.2N	12 pieces
260.230N	100 pieces



► with natural bristles, white, hard

REF	Content
260.21	12 pieces
260.230	100 pieces



► with nylon filament, blue, medium

REF	Content
260.240N	100 pieces



► with nylon filament, pink, soft

REF	Content
260.250N	100 pieces



► with nylon filament, white, soft

REF	Content
260.260N	100 pieces

Specifications:

All dental brushes are designed to be mounted on the angled hand piece. All shafts comply with the ISO 1797 standard. The trim length is 5 mm. On the polishing surface, the brushes have a diameter of 7 mm.



Becht prophylactic brushes are class IIa medical devices and intended for single use only. All packaging units are shipped non-sterile. Please observe the maximum working speed of 5000 min⁻¹ rpm.

Prophylactic Pastes

Simple, fast and reliable.

Our prophylactic pastes are your number one choice when it comes to preventing caries and periodontal disease. Each paste is optimally matched to the respective indication and can be used to easily and gently remove discolorations and even stubborn plaque, resulting in

smooth and clean surfaces. In addition, sodium fluoride promotes the remineralization of enamel and prevents inflammation of the gums. The added mint flavor gives your patients a lasting feeling of freshness during and after treatment.

ProfiGuard

For the removal of discolorations and plaque

- ▶ with 2% sodium fluoride
- ▶ vegan, lactose-free
- ▶ gluten and phthalate-free



REF	Color	RDA	Tube
480	blue	250	95 g

ProfiPolish

For the final polishing of vital teeth and fillings

- ▶ with 2% sodium fluoride
- ▶ vegan, lactose-free
- ▶ gluten and phthalate-free



REF	Color	RDA	Tube
481	yellow	40	95 g

i You can trust in Becht's professional prophylactic solutions. In addition to prophylactic pastes, we also offer our own range of prophylactic brushes and polishers. These are variable in mounting and adapted to the respective application.



ProphyRepair

- ▶ creamy consistency that is easy to apply
- ▶ with 0,5 % Hydroxylapatite
- ▶ water soluble
- ▶ vegan and lactose-free
- ▶ gluten and phthalate-free
- ▶ low foaming property allows a good view of the working field
- ▶ mild mint flavor



REF	Color	RDA	Tube
486	white	34 (final polishing)	95 g

Becht's **ProphyRepair** sets unparalleled standards for prophylactic pastes while offering an all in-one ergonomic solution for gentle cleaning, effective fine polishing and enamel remineralization.

Our use of Hydroxylapatite as an alternative to fluoride is another distinctive feature that has an even greater effect on remineralization and enamel build-up.

ProphyRepair can be used in a multitude of ways, including for prophylaxis on natural healthy teeth, for cleaning teeth before surgery and prior to bleaching.

i ProphyRepair is a progressively activated prophylactic paste and contains silicates. After just brief polishing, silicates change their geometry. That way, after its initial cleaning strength unfolds, the paste's properties adapt to allow final, high-gloss polishing.

Flat- and Pointed Brushes

For all users who prefer screw-in brushes to clean and polish during a prophylaxis treatment, we offer suitable high-quality variants.

Flat Brush

- ▶ for cleaning and polishing of tooth surfaces
- ▶ with nylon filament



REF	Content
206	24 pieces

Pointed Brush

- ▶ for interproximal use
- ▶ with nylon filament



REF	Content
207	24 pieces

Mandrels

- ▶ to screw-in prophylactic polishers and to be mounted on angled handpieces
- ▶ 14 mm long, to reprocess



REF	Content
210	1 piece

- ▶ to snap-on prophylactic polishers and to be mounted on angled handpieces
- ▶ 14 mm long, to reprocess



REF	Content
212	1 piece

Dental Floss

Fresh protection for teeth and gums.

Cleaning interdental spaces does not have to be time-consuming and difficult. That is, as long as you use a high-quality product like Becht dental floss. Becht dental floss is pleasant-tasting for your patients and thoroughly cleans interdental spaces of impurities and plaque.

Our pure natural silk dental floss is easy to thread and glides smoothly between your patients' teeth. Much to their delight, it causes neither irritation nor pain. This protective effect is further enhanced by the application of a wax layer. The minty aroma provides a lasting feeling of freshness. Finally, we at Becht coat our dental floss with xylitol to encourage the remineralization of enamel. All in all, our dental floss offers a clean, hygienic solution with minimum effort required by the dental staff.



Natural Dental Floss

- ▶ made of natural silk
- ▶ waxed
- ▶ mint flavored with xylitol
- ▶ in the attractive tooth-box

REF	length
484	25 m
485	50 m

Disposable Prophy Angles

No more time-consuming reprocessing, simply replace: Polishing attachments have long been considered single-use products. To truly keep the risk of infection under control, however, the handpiece – itself a germ carrier – must also be eliminated. So what could be more logical than to develop a

time-saving, reliable solution where the polishing head and handpiece are manufactured as one integrated component and simply replaced together after use? And by meeting the ergonomic requirements as well, you as the user benefit from true added value Becht products.



Becht4Prophy

- ▶ ergonomic design and rounded head to access hard-to-reach areas with ease
- ▶ inner turbine blade design with nubby surface for superior paste delivery, greater interproximal reach and less splatter
- ▶ soft and hard cups meet clinician- and patient-specific requirements
- ▶ advanced ergonomic 105° contra angle design allows for a more comfortable and neutral wrist position
- ▶ maximize patient acceptance

REF	Color	Quality	Content
265	purple	hard	100 pieces
267	pink	soft	100 pieces



- i** Our Becht4Prophy Disposable Prophy Angles are class IIa medical devices and intended for single use only. All packaging units are shipped non-sterile. We recommend hand pieces like the Proxeo TWIST from W+H or with Doriot connectors. Recommended rpm: 1500 – 3000 min⁻¹

Endodontics

Take a closer look at the sharp details.
And discover the genuine meaning of professional quality.



Temporary Root Filling Material

Even with the most scrupulously preparation, it is not always possible to prevent germs from remaining in the root canal and leading to reinfection of the surrounding tissue. Not only does the double active principle of our ready-to-use **Asphaline temp** promote the healing process of gangrenous root canals. The paste – together with polymer-bound iodine – also forms a mechanical barrier to prevent new bacteria and viruses from entering the root canal.

Asphaline temp

- ▶ encourages complete healing of infected areas
- ▶ free of paraformaldehyde und eugenol
- ▶ adheres excellent to the dentin
- ▶ radiopaque
- ▶ can be mixed with other water-based pastes

i The resiliently soft paste can be applied and removed using conventional root canal techniques and instruments.

REF	Tube
550	7 g



Permanent Root Filling Material

In along the endodontic treatment chain **Perma Evolution** is regarded as THE permanent root filling material. Based on proven epoxy amine technology, this chemically curing 2-component material confers a multitude of benefits on users and patients alike. The dedicated selection of starting materials ensures a high load-bearing capacity and density of the paste in the root canal. It also exhibits excellent bonding with the surrounding dentin. The microbicidal effect in the liquid phase guarantees the best protection against reinfection. Finally, by mixing the pastes in the double-chamber syringe, you achieve a high degree of safety and ergonomics chairside while preventing the transfer of germs into the root canal. Use Becht guttapercha points for optimal lateral condensation.

Perma Evolution

- ▶ free of iodoform and paraformaldehyde for best biocompatibility
- ▶ outstanding dimensional stability
- ▶ strong adhesion to the dentin
- ▶ radiopaque
- ▶ easy retreatment
- ▶ suitable for all orthograde root filling techniques
- ▶ fulfils the requirements of EN ISO 6876 for dental root canal sealing materials
- ▶ working time: 15 minutes
- ▶ setting time: 24 hours



REF	Product
555	Automix syringe with 5 ml content, 20 mixing cannulas and 20 endo tips
555.0	Refill with automix syringe with 5 ml content, without cannulas and endo tips
555.4	Starter Kit with 1,5 ml content, 2 mixing cannulas and 2 endo tips
555.1	Refill with 25 mixing cannulas
555.2	Refill with 25 endo tips



Paper Points

The first choice for disinfecting insertions and for absorbing liquid and secretions after root canal preparation. High rigidity so that the tips can be inserted even into curved root canals without buckling. Pre-sterilized

to prevent germs from being introduced into the root canal. The color coding is designed to match the endodontic instruments.



Safety Color Paper Points

REF	ISO	Content
937.1	15-40	200 pieces
937.2	45-80	120 pieces



Color-coded Paper Points

REF	ISO	Content
930.1	15-40	200 pieces
930.2	45-80	120 pieces
933.1	15-40	500 pieces
933.2	45-80	300 pieces



White Paper Points

REF	ISO	Content
931.1	15-40	200 pieces
931.2	45-80	120 pieces
931.5	90-140	120 pieces
932.3	15-40	500 pieces
932.4	45-80	300 pieces



Greater Taper Paper Points

REF	GT	ISO	Content
948.1	04	15-40	60 pieces
949.1	06	15-40	60 pieces

i All paper and guttapercha points are manufactured according to ISO standards and are 28 mm long. Medical devices according to the directive 93/42/EEC.

Guttapercha Points

Thanks to their biocompatibility, high moisture impermeability and lack of absorptivity by the surrounding tissue, our points are ideal for filling the prepared root canals and sealing with a permanent root filling material,

e.g. Perma Evolution. High radiopacity is guaranteed. The color coding is designed to match the endodontic instruments. Recommended for use in both the step-back and crown-down techniques.

Safety Color Guttapercha Points

REF	ISO	Content
936.1	15-40	100 pieces
936.2	45-80	100 pieces



Color-coded Guttapercha Points

REF	ISO	Content
935.1	15-40	100 pieces
935.2	45-80	100 pieces



Pink Guttapercha Points

REF	ISO	Content
934.1	15-40	100 pieces
934.2	45-80	100 pieces
934.5	90-140	100 pieces



Greater Taper Pink Guttapercha Points

REF	GT	ISO	Content
946.1	04	15-40	60 pieces
947.1	06	15-40	60 pieces

Opaline and Glass Products

Consistently good quality keeps getting better and better:
Our products have sustainability built-in.
Since 1926.



Medi-Spenser

Our ingenious system for hygienic storage and economical, highly accurate dispensing of even highly viscous medicines. The different colors of the Medi-Spensers and dappen dishes make it easy to identify contents and avoid mix-ups. High-quality surfaces make the system resistant to even the most aggressive liquids. All parts of the system can be disinfected and are autoclavable. Real added value for your practice!

Medi-Spenser Combination System

complete with Medi-Spensers, silicone membranes, dappen dishes, combi stand

- ▶ set of 5, assorted in the standard colors
- ▶ set of 3, assorted in the standard colors

REF	System	Color
796.0	set of 5, assorted	clear, yellow, rose, green, blue
796.1	set of 3, assorted	clear, yellow, rose



Medi-Spensors

with silicone membranes,
autoclavable



REF	System
795.0	set of 5 (clear, yellow, rose, green, blue)
795.1	set of 3 (clear, yellow, green)

REF	Color
795.3	clear
795.4	yellow
795.5	rose
795.6	green
795.7	blue
795.8	brown

Combi Stands

of chrome-nickel steel, stainless



- ▶ for 5 Medi-Spensors and 5 dappen dishes
- ▶ for 3 Medi-Spensors and 3 dappen dishes



REF	System	Size
395	for 5	198 x 98 x 33 mm
395.1	for 3	122 x 98 x 33 mm

Silicone Membranes

for Medi-Spensors



REF	Set
795.10	5 pieces

Dappen Dishes

Dappen Dishes

of high quality opaline

with an easy grip, corrugated outer surface and can be used on both ends for different purposes, e. g. for the preparation of cement and filling materials as well as for the economical and easy loading of the amalgam carrier. Approx. 2–3 ml capacity.



REF	Size
689	32 mm in dia., 30 mm high

Elegant, white opalescent glass. Unrivalled durability and value. Optimized composition for reprocessing opaline glass bowls and containers in autoclaves of the latest generation. Smooth and sealed surfaces provide germs minimal space to attack. Therefore it is ideal for the hygienic storage of dental materials and instruments. High resistance to alkalis and acids used in practice. Very low effect to glare. Versatile combinable with other opaline and clear glass products.



Dappen Dishes

of colored glass

decagonal, with easy-grip surface, both ends with different shapes. Suitable for the preparation of cement and filling materials. The dappen dishes are also supplied individually. Not autoclavable. Approx. 2–3 ml capacity. Size: 32 mm in dia., 30 mm high.

REF	Set
783.7	5 colors, assorted (clear, yellow, rose, green, blue)
783.5	3 colors, assorted (clear, yellow and rose)

REF	Color
783	clear
784	yellow
785	rose
786	green
787	blue
788	brown

Medicament Bottles

for keeping medicaments. The coding system with rings in different colors ensures safe identification of its content. Lid with easy-grip cover and airtight closure. The well rounded interior permits the contents to be used up to the last drop. Size: 32 mm in dia. at base, 42 mm high, approx. 3 ml capacity.

i For information on proper reprocessing see www.becht-online.de

Medicament Bottles

of colored glass



REF	Set	REF complete	REF lid	Color
743.7	5 colors, assorted (clear, yellow, rose, green, blue)	743	743.2	clear
		744	744.2	yellow
		745	745.2	rose
		746	746.2	green
		747	747.2	blue
		748	748.2	brown

Medicament Bottles

of Simplex opaline, with color rings on the shoulder of the base and lower brim of the cover.



REF	Set	REF complete	REF lid	Color ring
698.0	5 colors, assorted (yellow, red, green, blue, black)	698.02	698.22	yellow
		698.03	698.23	red
		698.04	698.24	green
		698.05	698.25	blue
		698.06	698.26	black



Medicament Bottles

of high quality opaline

with special color coding system for storage in drawers.



REF	Set
699.0	5 colors, assorted (yellow, red, green, blue, black)

REF complete	REF lid	Color ring
699.02	699.22	yellow
699.03	699.23	red
699.04	699.24	green
699.05	699.25	blue
699.06	699.26	black



Medicament Bottles

of high quality opaline

with special color coding system for storage in drawers, with color rings on the upper brim of the base and lower brim of the cover.



REF	Set
699.1	5 colors, assorted (yellow, red, green, blue, black)

REF complete	REF lid	Color ring
699.12	699.22	yellow
699.13	699.23	red
699.14	699.24	green
699.15	699.25	blue
699.16	699.26	black

Bottle Stands

Bottle Stand

of high quality opaline

- ▶ to hold 5 dappen dishes or 5 covered bottles



straight

curved

REF	Form	Size
600	straight	207 x 47 x 20 mm
623	curved	215 x 24 mm

Bottle Stand

of chrome-nickel steel, matt surface,
straight, stainless

- ▶ for 5 or 3 dappen dishes or covered bottles

REF	System	Size
601	for 5	198 x 44 x 17 mm
601.1	for 3	121 x 44 x 17 mm



Paper Tissues

of crepe paper

highly absorbent, to collect liquids, in use with
dappen dishes or covered bottles stored in bottle
stands or dental drawers.

- ▶ for 5 dappen dishes or covered bottles

REF	Size	Content
33	213 x 75 mm	250 pieces



Standard Trays and Containers

Our standard trays are available in different sizes and feature compartments for orderly, space-saving storage of materials and instruments. Infinitely combinable. Made of high-quality opaline. Matching lids made

of stainless steel are also available for hygienic content storage. Choose according to your individual needs.



Standard Tray

of high quality opaline

all-purpose tray for the hygienic placing of dental forceps, elevators, needle holders, scissors, mirrors and tweezers.

REF	Size
1	200 x 100 x 22 mm



Standard Tray

of high quality opaline

all-purpose tray for the hygienic placing of 8 single-ended instruments.

REF	Size
2	200 x 100 x 30 mm



Standard Tray

of high quality opaline

for the orderly placing of small instruments in 6 compartments.

REF	Size
3	200 x 100 x 22 mm

Standard Tray

of high quality opaline

glass knobs will keep up to 9 double-ended instruments in their place.



REF

4

Size

200 x 100 x 22 mm

Standard Tray

of high quality opaline

for hand instruments and separating strips. Recesses in the partitions make it easy to pick up the instruments from the 3 compartments.



REF

6

Size

200 x 100 x 22 mm

Standard Tray

of high quality opaline

instruments of various length can be arranged in 6 compartments.



REF

8

Size

200 x 100 x 22 mm



Protect your instruments against soiling and contamination and always use the trays and containers with lids (p. 57). Only use manufacturer-recommended cleaning agents and disinfectants.



Standard Tray

of high quality opaline

to rest or exchange burs. This tray makes use of even small spaces in drawers.

REF	Size	Standard size
14	100 x 50 x 22 mm	1/4



Standard Tray

of high quality opaline

for burs and cotton pellets. This tray makes use of even small spaces in drawers.

REF	Size	Standard size
15	100 x 100 x 22 mm	1/2



Antifekt-Instrument Rest

of high quality opaline

for placing of single-ended instruments.

REF	Size
627	120 x 30 x 25 mm



Porcelain Tray

for use with small instruments, designed for multi-purpose.

REF	Size
1718	70 x 40 x 18 mm

Containers and Lids

Crystal Glass Instrument Tray



REF	Size
760	120 x 60 x 40 mm
761	200 x 100 x 50 mm, autoclavable
762	200 x 100 x 50 mm

Opaline Instrument Tray



REF	Size
656	200 x 100 x 55 mm

Stainless Steel Lid

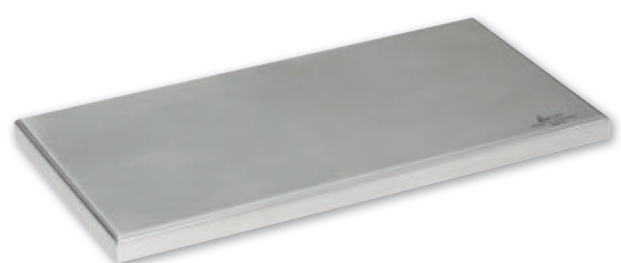
with knob



REF	For tray
362.2	REF 761
362.2	REF 762
362.2	Standard Tray REF 1-8

Stainless Steel Lid

without knob



REF	For tray
362.3	REF 761
362.3	REF 762
362.3	Standard Tray REF 1-8



Unikap Closure

of high quality opaline

to cover the outlet of spittoon bowls,
suitable for all brands.

REF	Size
639	65 mm in dia., ca. 44 mm high
639.1	60 mm in dia., ca. 44 mm high



Denture Bowl

of high quality opaline

for universal use.

REF	Size
668	110 mm in dia., 35 mm high

Waste Receiver

of porcelain



REF	Size
1785	72 mm in dia. , 115 mm high

Disinfecting Jar

of high quality opaline

stable type. Broad base for better stability and
reinforced brim to avoid chipping when hit by
instruments.



REF	Size
648	88 mm in dia., 120 mm high

Fräsator Bur Disinfector

The original! For disinfecting rotating instruments. Used instruments can be dropped directly into the container through the slit in the cover. In conjunction, we recommend our instrument disinfectant Bechtol S plus.

The sieve-insert can be lifted to allow the liquid to drain. Available in two sizes. Standard in every dental practice. Modern, valuable and durable.

Fräsator

of high quality opaline

complete with slit cover and sieve-insert for all bur types and root canal instruments.

► size: 96/80 mm in dia., 65 mm high

REF	Spare parts
630	complete
630.1	base
630.2	sieve-insert (plastic)
630.3	cover with slit
630.4	closure rod

Mini-Fräsator

of high quality opaline

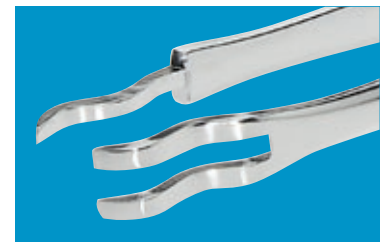
complete with slit cover and sieve-insert, particularly suitable for turbine burs and angled instruments.

► size: 78/60 mm in dia., 66 mm high

REF	Spare parts
631	complete
631.1	base
631.2	sieve-insert (plastic)
631.3	cover with slit
631.4	closure rod

Bur Tweezers

overlapping claws of the tweezers make it easy to safely pick up and lift the instruments from the disinfection liquid without the risk of bending or breaking root canal instruments.



REF	Content
910	1 piece



Containers



Waste Receiver

free standing model

of high quality opaline, complete with exchangeable lid REF 653 with star-shaped opening. Used cotton pads and pellets can easily be removed.



REF	Size
652	75 x 72 mm in dia

Waste Receiver

for drawers

of high quality opaline, complete with exchangeable lid REF 653 with star-shaped opening. Used cotton pads and pellets can easily be removed.



REF	Size
663	80 x 66 mm in dia

Cotton Wool Container

free standing model

of high quality opaline, complete with exchangeable lid REF 655 and coil spring REF 327 for pushing up the cotton wool.



REF	Size
654	75 x 72 mm in dia

Cotton Wool Container

for drawers

of high quality opaline, complete with exchangeable lid REF 655 with circular opening and with coil spring REF 327 for pushing up the cotton wool.



REF	Size
664	80 x 66 mm in dia

Pellet Container

free standing model

of high quality opaline, complete with metal insert and grid REF 326 and coil spring REF 327 for pushing up the pellets.



REF	Size
651	75 x 72 mm in dia

Pellet Container

for drawers

of high quality opaline, complete with metal insert and grid REF 326 and coil spring REF 327 for pushing up the pellets.



REF	Size
661	80 x 66 mm in dia

Tidy and uncluttered – the way every practice wants to present itself to its patients. Our organization aids made of opaline and clear glass help you achieve this objective. Versatile use for cotton wool, cotton rolls, pellets, small instruments etc. – and don't forget to order a matching lid! Hygiene during treatment is very important to us.

Glass Jars for Cotton Wool, Pellets and Dabs

the content of the jars can be kept sterile with ground in or ground on glass covers.



▶ with ground in glass cover, autoclavable

REF	Size
727	65 mm in dia., 40 mm high



▶ with ground on glass cover, not autoclavable

REF	Size
728	77/92 mm in dia., 79 mm high

Glass Jars for Cotton Wool

with overlapping glass cover



REF	Size
734	100 mm in dia., 50 mm high
735	100 mm in dia., 100 mm high
736	120 mm in dia., 120 mm high

i For information on proper reprocessing see www.becht-online.de

Glass Jars for Cotton Wool

with ground in glass cover



REF	Size
735.1	100 mm in dia., 100 mm high
736.1	120 mm in dia., 120 mm high

Trays/Dishes



Asphalin Trays

different sizes of the compartments allow the individual filling with root canal instruments, paper points and guttapercha points. Airtight closure.

▶ of crystal glass, 8 compartments, not autoclavable

▶ of high quality opaline, 8 compartments, autoclavable

Bur Tweezers

overlapping claws ensure the safe and easy picking up of all small objects thus preventing the bending or breaking of the root canal instruments.

REF	Size
700	135 mm in dia., 45 mm high

REF	Size
633	135 mm in dia., 45 mm high

REF	Content
910	1 piece

Petri Dishes

of crystal glass, resistant to sudden changes of temperature. Available with different partitions and in several sizes for the orderly keeping of small parts.

Petri Dish

without partitions, with lid



REF	Size
791	60 mm in dia., 23 mm high

Petri Dish

without partitions, with lid



REF	Size
792	80 mm in dia., 23 mm high

Petri Dish

without partitions, with lid



REF	Size
703	100 mm in dia., 20 mm high



Petri Dish

with two compartments, with lid



REF	Size
704	100 mm in dia., 23 mm high



Petri Dish

with three compartments, with lid



REF	Size
705	100 mm in dia., 23 mm high



Petri Dish

with four compartments, with lid



REF	Size
706	100 mm in dia., 23 mm high



Alcohol Lamps

Alcohol Lamp

of high quality opaline

complete with ground on cover, burner and wick,
capacity: approx. 75 ml.



REF	Spare parts
640	complete, size 64 mm in dia., 90 mm high
640.1	cap for alcohol lamp
458	plaited wick, 6 mm in dia., by the metre
468	burner tube with cork

Alcohol Lamp

of high quality opaline

complete with screw cap and adjustable wick,
capacity: approx. 100 ml.



REF	Spare parts
643	complete, size 65 mm in dia., 92 mm high
457	plaited wick, 5 mm in dia.
469	screw cap

Alcohol Lamp

of clear glass

complete with screw cap and adjustable wick,
capacity: approx. 100 ml.



REF	Spare parts
742	complete, size 64 mm in dia., 90 mm high
742.1	cap for alcohol lamp
458	plaited wick, 6 mm in dia., by the metre
468	burner tube with cork

Alcohol Lamp

of clear glass

complete with screw cap and adjustable wick,
capacity: approx. 100 ml.

REF	Spare parts
755	complete, size 80 mm in dia., 82 mm high
457	plaited wick, 5 mm in dia., by the metre
469	screw cap



Alcohol Lamp

of clear glass

complete with ground on cap, burner and wick,
capacity: approx. 90 ml.

REF	Spare parts
741	complete, size 79 mm in dia., 123 mm high
458	plaited wick, 6 mm in dia., by the metre
468	burner tube with cork



Alcohol Lamp

of stainless steel

complete with screw cap and adjustable wick,
capacity: approx. 60 ml.

REF	Spare parts
329	complete, size 70 mm in dia., 64 mm high
460	flat wick, 12 mm, by the metre



i Use alcohol lamps safely. Only fill up to 2/3 to avoid alcohol leakage.

Glass Blocks and Slabs

The glass mixing blocks and slabs are beveled and polished on all sides. Place glass mixing blocks and slabs with the ground side on the bench-top to avoid sliding. The thickness of the glass prevents an increase of

temperature and thus the premature setting of filling materials. Clean with warm water and a soft brush.

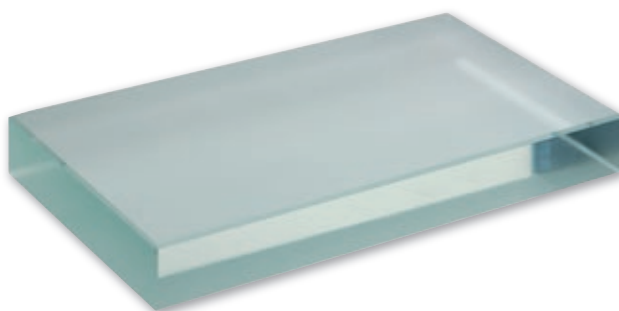
Glass Block

size: 150 x 75 mm, thickness approx. 18 – 20 mm



- ▶ one side ground to avoid sliding on the desk surface

REF	Content
722	1 piece



- ▶ both sides polished

REF	Content
723	1 piece

Glass Slabs

size: 95 x 70 mm, thickness approx. 5 – 6 mm

- ▶ one side ground to avoid sliding on the desk surface

REF	Content
724	12 pieces

- ▶ both sides polished

REF	Content
725	12 pieces



Rinsing Jars

Our Ökopal rinsing jars and of clear glass are always the fashion. Dishwasher-safe, autoclavable and therefore reusable. Our contribution in the fight against mountains of rubbish and towards improving the ecobalance. Exceedingly high quality in their design.

Rinsing Jars

of clear glass

cylindrical jars of crystal glass, with melted brim, dishwasher safe, size: 64 mm in dia., 86 mm high, weight: approx. 65 g.



REF	Content
658	12 jars

Rinsing Jars ÖKOPAL

of high quality opaline

stackable, dishwasher safe and hardened to withstand easy breaking, space-saving!

size: upper end 72 mm in dia., base 45 mm in dia., 70 mm high, weight approx. 116 g



REF	Content
650	12 jars

Cotton Wool Center



Cotton Wool Center

complete with insert with circular opening for cotton wool and narrow bars for small cotton pellets and pads.

REF	Color
414.40	smoked
414.41	opaque



Cotton Wool Center

complete with dividers for universal use of cotton pellets and pads.

REF	Color
414.10	smoked
414.11	opaque

Cotton Wool Center

complete with insert with circular opening for cotton wool and broad bars for larger cotton pellets and pads.



REF	Color
414.50	smoked
414.51	opaque

Cotton wool, cotton rolls or cotton pellets – perfectly packaged: Our high-quality systems offer you countless possibilities. Made of solid acrylic glass, they are dimensionally and thermally stable up to 90 °C and have an amazingly compact size of 181 x 109 x 80 mm. The overlapping lid makes one-handed opening a cinch. In accordance with RKI guidelines, our systems are also ideally suited for chairside use.

Cotton Roll Container

with removable dividers for the hygienic storage of cotton rolls in different sizes.



REF	Color
415	smoked
415.11	opaque

Cotton Container



Container with lid

with bars for the universal use of cotton pellets and pads.

Size: 97 x 68 x 68 mm

REF	Color
417.10	smoked
417.11	opaque



Container with lid

with circular opening for cotton wool and narrow bars for small cotton pellets and pads.

REF	Color
417.40	smoked
417.41	opaque



Simply hygienic: Our cotton wool dispensers are easy to disinfect with a surface disinfectant. We recommend our disinfectant spray Bechtoid plus (material compatibility proven by Röhm testing).

Container with lid

with circular opening for cotton wool and broad bars for larger cotton pellets and pads.



REF	Color
417.50	smoked
417.51	opaque

Cotton Roll Container

with partition for two different sizes of cotton rolls.



REF	Color
418	smoked
418.11	opaque



Always fitting – the lids to our pellet and cotton containers can also be exchanged later to suit your individual requirements. To refill, simply pull out the base plate and reinsert after filling.

Articulating Paper

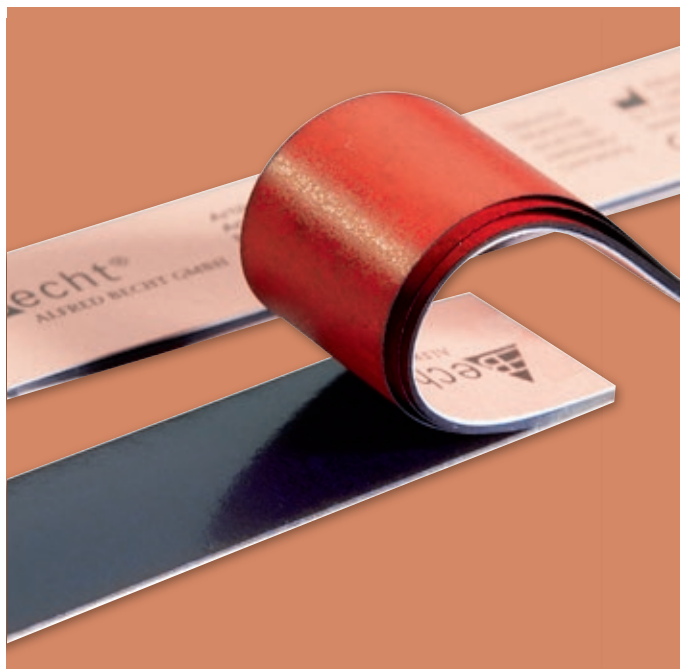
We have been producing articulating paper for more than two decades so that our customers can optimally marking occlusal contacts. With these treatment aids, we make it easier for dentists to restore properly functioning occlusion. All variants have very good marking properties,

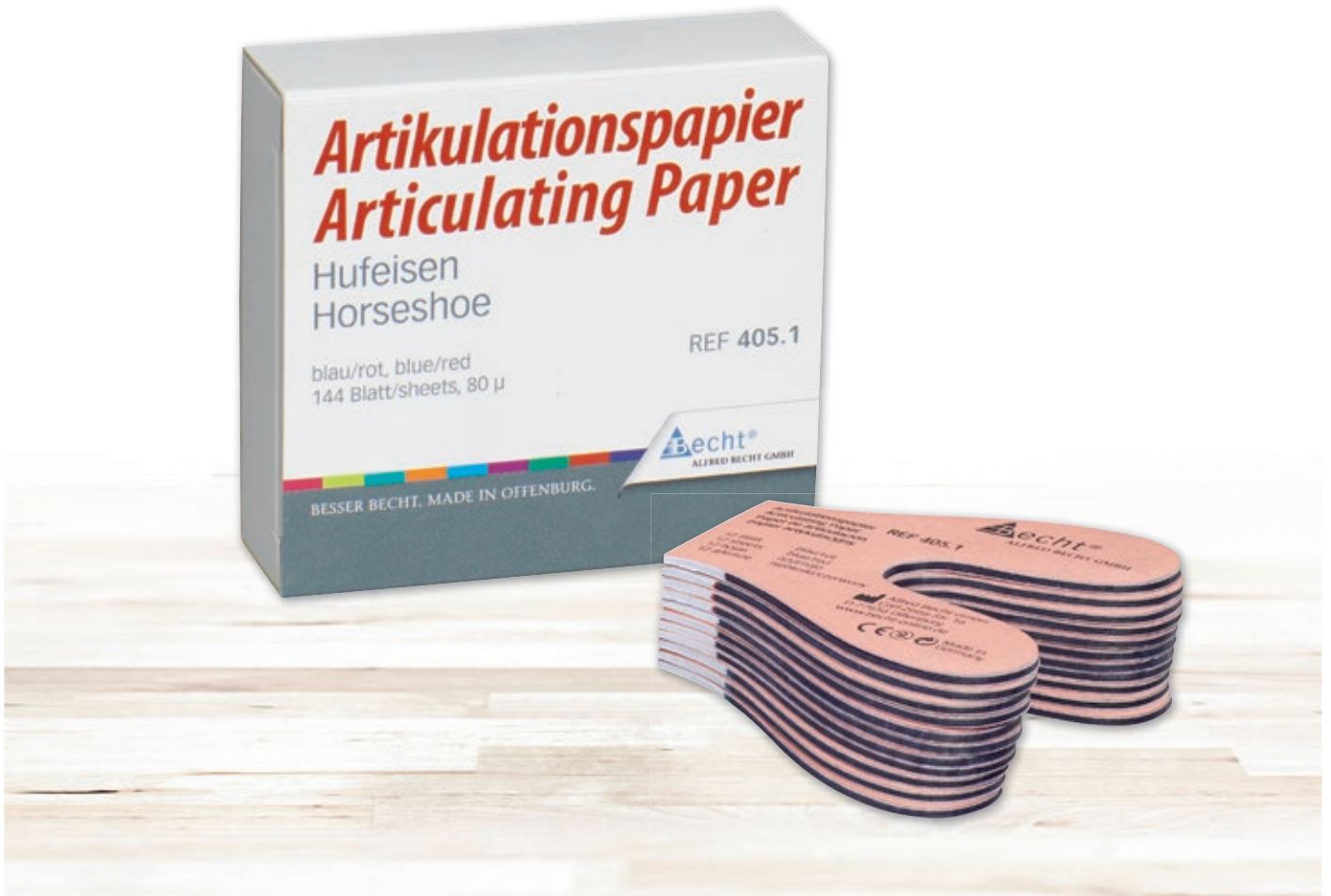
even on moist surfaces. Vibrant colors ensure clear and precise contact identification. Available in straight and horseshoe-shaped versions for the entire dental arch.

Articulating Paper

- ▶ Paper thickness: 80 μ
- ▶ straight, 20 x 85 mm
- ▶ Box with 12 books with 12 sheets

REF	Color
407	blue/blue
407.1	blue/red





Articulating Paper

- ▶ Paper thickness: 80 µ
- ▶ Horseshoe
- ▶ specially useful for patients who tend to bite unilaterally during the occlusion test
- ▶ Box with 12 books with 12 sheets

REF	Color
405	blue/blue
405.1	blue/red



ArtEXACT Articulating Paper

Wafer-thin and tear-resistant articulating paper for identifying and marking even the most minor occlusal dysfunctions.

- ▶ Paper thickness: 15 μ
- ▶ straight, 20 x 100 mm
- ▶ Box, for easy removing with one hand

REF	Color	Content
408.1	blue/red	250 sheets



Sundries



Crown Setting Instrument

made of acrylic glass

- ▶ ergonomic shape
- ▶ handy and solid type
- ▶ not autoclavable
- ▶ Reprocessing: Disinfection by Becht disinfecting wipes

REF
412

Content
1 piece



Universal Matrix Strips

of acetate foil

- ▶ Thickness: 50 μ
- ▶ Size: 8 x 140 mm
- ▶ transparent



REF
437

Content
100 pieces

Mixing Bowls

made of PVC, blue

- ▶ suitable for plaster and impression compounds
- ▶ easy to clean



REF
454.1
455.1

Content
300 ml
600 ml

Size
100 mm in dia., 80 mm high
130 mm in dia., 100 mm high

Tray Paper Topliner neo

Our tray paper is made of virgin fiber pulp, free of harmful substances and recycled paper. The smaller sheet size is used as a tray insert in autoclaves. The large-format on the other hand, absorbs liquids, there-

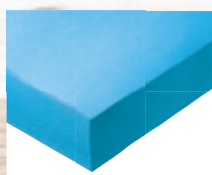
by creating a hygienic and safe environment on trays. The new and high-quality color line neo gives your practice a modern and unique touch.



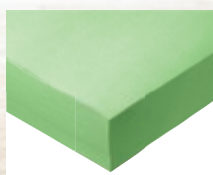
The Tray Paper neo is available in five colors. Take color into your dental office and choose your favorite.



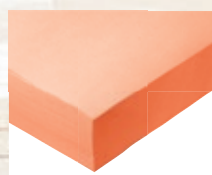
white



blue



lime



orange



pink



i Our tray paper is made of highly absorbent filter crepe paper, wood-free, bleached chlorine-free and contains optical brighteners.



Topliner neo

small

- ▶ size 280 x 180 mm
- ▶ in the dispenser box
- ▶ of crepe paper
- ▶ Content: 250 pieces

REF	Color
34.0	white
34.1	blue
34.2	lime
34.3	orange
34.4	pink

Topliner neo

large

- ▶ size 280 x 360 mm
- ▶ blistered pack
- ▶ of crepe paper
- ▶ Content: 250 pieces

REF	Color
35.0	white
35.1	blue
35.2	lime
35.3	orange
35.4	pink

Polishers

ProfiDent polishers can easily be reprocessed in autoclaves (up to 134 °C). Sterilization must not be performed in a chemical autoclave. We recommend our proven instrument disinfectants Bechtol Premium/Bechtol S plus. Our medical devices comply with Directive 93/42/EC, observe the instructions for use. All polishers are shipped non-sterile and with an ISO shaft for handpieces.

Pre-polishing

of Ceramics/Composites

- ▶ Silicone polisher
- ▶ RPM: 7.000 – 10.000 min⁻¹
- ▶ Grit: medium

REF	240.1	240.6	240.7	240.8
Size	5,5 x 15 mm	11 x 2,5 mm	5 x 10 mm	7 x 10 mm
Form	flame	lens	pointed	cup
Content	6 pieces	6 pieces	6 pieces	6 pieces



Starter Kit

- ▶ Set with one polisher each 240.1 – 240.8

REF	240.SET
Content	4 pieces

Pre-polishing

of Composites

- ▶ Polisher of Flex-material
- ▶ RPM: 7.000 – 10.000 min⁻¹
- ▶ Grit: medium

REF	228.1	228.2	228.3
Size	5 x 10 mm	6,5 x 9,5 mm	10 x 2,5 mm
Form	pointed	cup	lens
Content	6 pieces	6 pieces	6 pieces



Starter Kit

- ▶ Set with one polisher each 228.1 – 229.3



High-Shine Polishing

of Composites

- ▶ Polishers of Flex-material
- ▶ RPM: 7.000 – 10.000 min⁻¹
- ▶ Grit: fine

REF	229.1	229.2	229.3
Size	5 x 10 mm	6,5 x 9,5 mm	10 x 2,5 mm
Form	pointed	cup	lens
Content	6 pieces	6 pieces	6 pieces



REF	229.SET
Content	6 pieces

Polishing Strips

ProfiDent Abrasive Steel Strips

Stainless, flexible strips for removal of excess material of ceramics, composite and amalgam fillings.

- ▶ Coated on one side, with galvanically bonded aluminium oxide
- ▶ Thickness: 0,15 mm
- ▶ Grit: 60 µ
- ▶ Length: 135 mm



REF	9042.04	9042.06	9042.08
Width	4 mm	6 mm	8 mm
Content	12 pieces	12 pieces	12 pieces

Amalgam Polishing Strips

Highly flexible strips for polishing the interproximal area of amalgam fillings. The transparent base with its blue carborundum particles makes for consistently good visibility while working on the restoration. Efficient removal of excess material without risk of injury to gums. With easy-to-grip ends and uncoated window for easy threading between the teeth. Coated on one side.

- ▶ Grit: 80 µ
- ▶ Length: 150 mm

REF	9045.04	9045.06
Width	4 mm	6 mm
Content	12 pieces	12 pieces



Cards & Sundries

The Derfla-Card-Plus is easy to handle and offers even more possibilities – and it helps you to document all important prophylactic procedures in detail: the Derfla-Card-Plus is the perfect assistant in your everyday work.

You can use the cards to note the Periodontal Screening Index (PSI) and prophylactic procedures for children.

The format and alphabetic tabs of the Derfla-Card-Plus are compatible with all standard card index systems. The way in which periodontal status and treatment schedule are recorded on the cards corresponds to the forms used by public health insurance funds (Germany).

The cards also have a heading for existing and planned dental prostheses and an easy-to-follow bookkeeping section on the back. Documents and X-ray films can be stored safely in the transparent sleeve provided.

Derfla-Card-Plus

complete with cover card, patient's record card, filing device, transparent envelope, file headings, size: 209 x 155 mm, different colors.

► Pack with 100 pieces

REF Complete System	REF Cover-card	Color
60.1	61.1	grey
60.2	61.2	yellow
60.3	61.3	red
60.4	61.4	green
60.5	61.5	blue



Patient's Record Card

white, DIN A4



REF	Product	Content
72	for the public health system	Block with 100 pieces
72.1	for private insurances	Block with 100 pieces

Transparent Envelope

transparent, for Derfla-Card-Plus, to storage documents and X-Ray-Films.



REF	Content
73	100 pieces

Filing Device

self-adhesive



REF	Content
74	100 pieces

Address field

white, self-adhesive, for Derfla-Card-Plus



REF	Content
76.1	25 pieces

Transparent Envelope

for Record Cards REF 89, sealed on three sides.



REF	Content
69	100 pieces

Record Cards

They always find high acceptance. With tooth diagram and practical divisions printed on both sides for keeping clear accounts. Made of finest cardboard.

Size: 210 x 148 mm

► Pack with 100 pieces

REF	Color
89.1	white
89.2	yellow
89.3	red
89.4	green
89.5	blue



Mounts & Bags for X-Ray films

Mounts

green cardboard, with cellophane windows for films size 2 x 3 cm or 3 x 4 cm. Protect and hold films safely.

Size: 14,8 x 10,5 cm

REF	Product	Size	Content
81	for 1 film	DIN A6	100 pieces
82	for 2 films	DIN A6	100 pieces
84	for 4 films	DIN A6	50 pieces
86	for 6 films	DIN A6	50 pieces
83.11	for 11 films	DIN A5	25 pieces



Mounts

with white identification cards and cellophane window for films 2 x 3 cm, 3 x 4 cm and 4 x 5 cm.
Size: 6,8 x 8,3 cm



REF	Content
85	100 pieces

Endless File for X-Ray Films

made of special plastic foil, transparent with white marking strip.
Max. size of films: 2 x 3 cm or 3 x 4 cm

- ▶ easy to separate the requested number of pockets
- ▶ durable marking with all types of ball-point pens



REF	Content
87	160 pockets
87.1	480 pockets

Polishers & Brushes

Do you find yourself buying more and more polishers, brushes and geometries, all with identical characteristics and the same composition? We are breaking new ground with ProfiLab! ProfiLab tidies things up: We offer you perfectly matched, tried and tested products in a manageable

assortment of ranges that cover all standard materials and polishing levels. Your advantage: ProfiLab products give you fast polishing results, long service lives and an excellent return of investment.

Polishing Emulsion

high-shine emulsion for final polishing of precious alloys, acrylics and composites. Excellent results in a short time period. After polishing the material has reached a smooth and sealed surface. With fresh scent, skin friendly, non-toxic and economical.

► Bottle



REF	191
Content	100 ml

Silicone Polishers



REF	230.1	230.2	230.4
Application	Polishing of ceramics, composites, precious metal and acrylics	Polishing of ceramics, composites, precious metal and acrylics	Polishing of ceramics, composites, precious metal and acrylics
RPM	4.000 – 10.000 min-1	4.000 – 10.000 min-1	4.000 – 10.000 min-1
Size	22 x 3 mm	22 x 4 mm	6 x 24 mm
Form	wheel	lens	pointed
Content	12 pieces	12 pieces	12 pieces

Mounted Polishing Buffs



REF	290.1	292.1	296.1
Application	High-shine ceramics, composites, acrylics, precious metal/NEM/castings	High-shine ceramics, composites, acrylics, precious metal/NEM/castings	High-shine ceramics, composites, acrylics, precious metal/NEM/castings
RPM	5.000 – 8.000 min-1	5.000 – 10.000 min-1	5.000 – 8.000 min-1
Size	22 mm in dia.	22 mm in dia.	22 mm in dia.
Type	mounted for HP	mounted for HP	mounted for HP
Material	linen	cotton	microfiber/leather
Form	wheel	wheel	wheel
Polishing agent	Polishing Emulsion	Polishing Emulsion	Polishing Emulsion
Content	12 pieces	12 pieces	12 pieces



Scotch Brite™

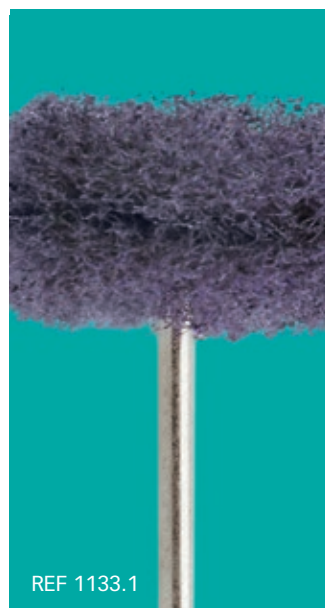


REF	1130.1	1132.1	1133.1	1134.1
Application	Pre-polishing of acrylics	Pre-polishing of acrylics	Pre-polishing of acrylics	Pre-polishing of acrylics
RPM	1.400 – 10.000 min-1	1.400 – 10.000 min-1	1.400 – 10.000 min-1	1.400 – 10.000 min-1
Size	25 mm in dia.	25 mm in dia.	25 mm in dia.	25 mm in dia.
Type	Scotch Brite™, mounted for HP	Scotch Brite™, mounted for HP	Scotch Brite™, mounted for HP	Scotch Brite™, mounted for HP
Material	Aluminium oxide, coarse	Aluminium oxide, medium	Aluminium oxide, fine	Aluminium oxide, extra fine
Content	6 pieces	6 pieces	6 pieces	6 pieces

Starter Kit Scotch Brite™ Polishers

with one polisher each REF 1130.1 – 1134.1

REF	1130.SET
Content	4 pieces



Mounted brushes



REF 293.1



REF 294.1



REF	293.1	294.1	1100.1 Taurus	1112.1 Taurus
Application	High-shine polishing of ceramics and composites	Pre-polishing of acrylics	Pre-polishing of acrylics, polishing of ceramics, composites, precious metal/NEM/castings	Pre-polishing of acrylics, polishing of ceramics, composites, precious metal/NEM/castings
RPM	15.000 min-1	15.000 min-1	max. 16.000 min-1	max. 16.000 min-1
Size	22 mm in dia.	22 mm in dia.	19 mm dia.	19 mm in dia.
Type	mounted for HP	mounted for HP	mounted for HP	mounted for HP
Material	goat hair	bristles	goat hair	horse hair
Form	star-shaped	star-shaped	wheel	wheel
Polishing agent	pumice powder/ ProfiLab Polishing paste	pumice powder/ ProfiLab Polishing paste	pumice powder/ ProfiLab Polishing paste	pumice powder/ ProfiLab Polishing paste
Content	12 Stück	12 Stück	12 Stück	12 Stück

Narrow Brushes



REF 178.1



REF 179.1

REF	178.1	179.1
Application	Polishing of precious metal/NEM/castings	Polishing of precious metal/NEM/castings
RPM	2.800 min-1	2.800 min-1
Size	40/60 mm in dia.	50/70 mm in dia.
Product	brush wheel	brush wheel
Material	short Chungking bristles	short Chungking bristles
Bristles	2 rows, convergent	2 rows, convergent
Polishing agent	ProfiLab Polishing paste	ProfiLab Polishing paste
Content	1 piece	1 piece

Brush Wheels



REF	158.1	159.1	160.1	170.1 straight 171.1 convergent
Applikation	Pre-polishing acrylics	Pre-polishing acrylics	Pre-polishing acrylics	Pre-polishing acrylics
RPM	1.400 – 2.800 min-1	1.400 – 2.800 min-1	1.400 – 2.800 min-1	1.400 – 2.800 min-1
Size	25/44 mm in dia.	25/50 mm in dia.	28/55 mm in dia.	40/80 mm in dia.
Material	Chungking bristles	Chungking bristles	Chungking bristles	Chungking bristles
Type	1 row, straight	2 rows, convergent	3 rows, convergent	4 rows
Polishing agent	pumice powder/ProfiLab Polishing paste	pumice powder/ProfiLab Polishing paste	pumice powder/ProfiLab Polishing paste	pumice powder/ProfiLab Polishing paste
Content	1 piece	1 piece	1 piece	1 piece



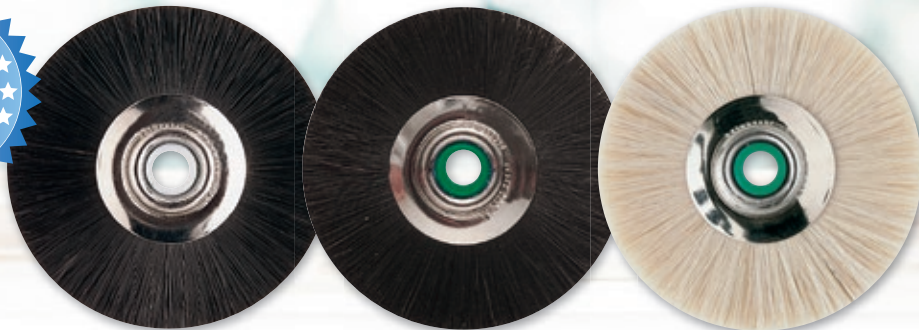
Brush Wheels with Insert



REF	173.3	174.3	176/176.1
Application	Pre-polishing acrylics	Pre-polishing acrylics	Pre-polishing acrylics
RPM	1.400 min-1	1.400 min-1	1.400 – 2.800 min-1
Size	40/80 mm in dia.	40/80 mm in dia.	25/55 mm in dia. / 40/80 mm in dia.
Material	Chungking bristles and muslin insert	Chungking bristles and muslin insert	white n ylon bristles and muslin insert
Poliermittel	pumice powder/ ProfiLab Polishing paste	pumice powder/ ProfiLab Polishing paste	pumice powder/ ProfiLab Polishing paste
Packungsinhalt	1 piece	1 piece	1 piece



Brush Wheels



REF	137/138	138.3	139
Application	Pre-polishing acrylics	Pre-polishing acrylics	Pre-polishing acrylics
RPM	2.800 min-1	2.800 min-1	2.800 min-1
Size	48 mm in dia.	48 mm in dia.	48 mm in dia.
Material	horse hair/ Chungking bristles	Chungking bristles and muslin insert	goat hair
Polishing agent	pumice powder/ProfiLab Polishing paste	pumice powder/ProfiLab Polishing paste	pumice powder/ProfiLab Polishing paste
Content	12 pieces	12 pieces	12 pieces



REF 138.3

Bufs



REF	279	296	299
Application	Pre-polishing of precious metal/NEM/ castings, high-shine polishing ceramics, composites, acrylics	Pre-polishing of precious metal/NEM/ high-shine polishing ceramics, composites, acrylics	Pre-polishing of precious metal/NEM/ high-shine polishing acrylics
RPM	1.400 min-1	1.400 min-1	1.400 min-1
Size	100 mm in dia.	100 mm in dia.	100 mm in dia.
Product	Polishing buffer, soft tissue	Microfiber polishing buffer, leather	Polishing buffer, muslin
Plies	15	7	30
Polishing agent	Polishing Emulsion	Polishing Emulsion	Polishing Emulsion
Content	1 piece	1 piece	1 piece

Mixing Bowls for acrylics



REF	453.1	453.2	453.3
Material	of silicone with suction cup	of silicone with suction cup	of silicone with suction cup
Size	small, 32 mm in dia., 28 mm high	medium, 50 mm in dia., 45 mm high	large, 70 mm in dia., 60 mm high
Capacity	approx. 5 ml	approx. 25 ml	approx. 75 ml
Content	3 pieces	1 piece	1 piece

Porcelain Casserole



REF	1705
Application	Removal of oxide layers
Size	85 mm in dia.
Material	Porcelain

Index

A

Address field	81
Abrasive Steel Strips	79
AirFresh med	26
Alcohol Lamps	64, 65
Amalgam Polishing Strips	79
Antifekt-Instrument Rest	56
AquaHy	27
ArtEXACT Articulating Paper	74
Articulating Paper	72, 73
Asphalin B tablets	27
Asphaline temp	40
Asphalin Trays	62

B

Becht4care®	21
Becht4Prophy	37
Bechtifix alkoholfrei	15
Bechtifix plus	14
Bechtid Premium	20
Bechtol	24
Bechtol CLASSIC	23
Bechtol plus	24
Bechtol Premium	22
Bechtol S plus	25
Bechtozid plus	17
Bechtozid Premium	16
Bechtozid soft	18
Bechtozid sensitive	19
Becht Suction plus	26
Becht XL Wipes alcohol-free	13
Becht XL Wipes plus	12
Bottle Stand	53
Brushes, mounted	87
Brush Wheels	88, 90
Brush Wheels with Insert	89
Bufs	85, 90
Bur and Diamond Cleansing Brushes	28
Bur Tweezers	59, 62

C

Canister key	29
Color-coded Guttapercha Points	44
Color-coded Paper Points	42
Combi Stands	49
Cotton Roll Container	69, 71
Cotton Wool Center	68, 69
Cotton Wool Container	60, 61
Crown Setting Instrument	75
Crystal Glass Instrument Tray	57
Cup Brushes	33

D

Dappen Dishes	50
Dental floss	36
Denture Bowl	58
Derfla-Card-Plus	80
Disinfecting Jar	58
Disinfection tub	29
Dispenser pump	29

E

Endless File for X-Ray Films	83
------------------------------	----

F

Filing Device	81
Flat Brush	36
Fräsator	59

G

Glass Blocks	66
Glass Containers for instruments	57
Glass Jars for Cotton Wool	61
Glass Slabs	66
Greater Taper Paper Points	43
Greater Taper Pink Guttapercha Points	45

H

High-Shine Polishing	78
----------------------	----

L

Lids for trays and containers	57
-------------------------------	----

M

Mandrels	36
Medicament Bottles	51, 52
Medi-Spenser Combination System	48
Mini-Fräsator	59
Mixing Bowls	75, 95
Mounted brushes	87
Mounted Polishing Bufs	85
Mounts for X-Ray films	82, 83

N

Narrow Brushes	87
Natural Dental Floss	36

O

Opaline Instrument Tray	57
Ökopal rinsing jars	67

P

Paper Points	42, 43
Paper Tissues	53
Patient's Record Card	81
Pellet Container	60
Perma Evolution	41
Petri Dishes	62, 63
Pink Guttapercha Points	45
Pointed Brush	36
Polishing Emulsion	84
Porcelain Casserole	91
Porcelain Tray	56
ProfiGuard	34
ProfiPolish	34
Prophylactic Brushes	33, 36
Prophylactic Polishers	32
ProphyRepair	35
Pouring spout	29

R

Record Cards	81
Rinsing Jars	67
Rinsing Jars ÖKOPAL	67

S

Safety Color Guttapercha Points	44
Safety Color Paper Points	42
Scotch Brite™	86
Silicone Membranes	49
Silicone Polishers	78, 84
Stainless Steel Lid	57
Standard Tray	54 – 56

T

Topliner neo	76, 77
Transparent Envelope	81

U

Unikap Closure	58
Universal Matrix Strips	75

W

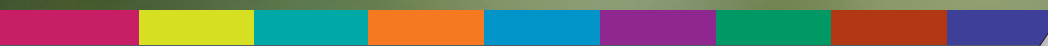
Waste Receiver	58, 60
White Paper Points	43



Alfred Becht GmbH
P.O.B. 11 45
D-77601 Offenburg

Tel. +49 781 60586-0
Fax +49 781 60586-40
www.becht-online.de

BE0219Ka/E



BESSER BECHT. MADE IN OFFENBURG.

 **Becht®**

ALFRED BECHT GMBH